

# TruVision Device Manager 9.2

## Management software for all TruVision devices

### Overview

The TruVision Device Manager is a convenient utility software for use with TruVision IP cameras and recorders. The tool can also discover TruPortal access control panels, IFS network switches and UltraSync (ZeroWire) panels on the LAN network.

### Easy & convenient!

The software provides an easy method of searching active online IP devices within a subnet without knowing the device's IP address. Once the device is found on the network by the software, a user can easily configure the network setting parameters.

TruVision Device Manager also supports the activation of new TruVision devices and has an embedded storage calculator for calculating the estimated storage capacity based on camera parameters.

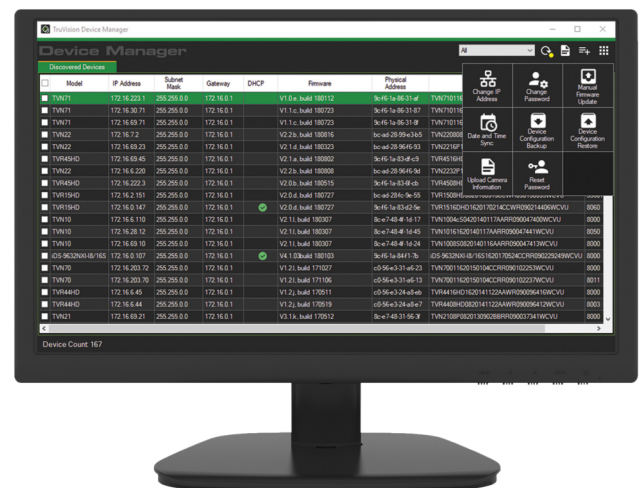
The backup/restore function allows the user to keep a backup of device configuration or restore the configuration when needed.

The software supports the change of the administrator password of the devices.

Time and date can be synced via the software among all the TruVision devices and TruPortal panels on the LAN network.

The firmware of TruVision devices can be updated in one or more devices via the bulk update feature.

The supported features may differ depending on the device type, model and firmware! See the user manual for more information.



### Details

- Device discovery for TruVision devices, TruPortal panels, IFS network switches and UltraSync (ZeroWire) panels
- Set network parameters for TruVision devices, TruPortal panels and IFS network switches
- Change administrator password of TruVision devices
- Manual firmware upgrade for TruVision devices
- Date/time sync for TruVision devices and TruPortal panels
- Backup/restore configuration for TruVision devices

# TruVision Device Manager 9.2

## Management software for all TruVision devices

### Technical specifications

---

#### General

Supported hardware	IFS network switches, TruPortal, TruVision DVRs, TruVision IP cameras, TruVision NVRs
Software type	Configuration software
Segmentation	Commercial
Supported technology	Video

#### Software details

Software architecture	Standalone
Language user interface	English

#### System requirements

Supported operating system	Windows 10, Windows 11, Windows 7, Windows 8, Windows 8.x
----------------------------	---

#### Features

Activate devices	Activate new TruVision devices
Storage calculator	Calculate estimated storage capacity for TruVision recorders
Device Discovery	Device discovery on LAN for TruVision devices, TruPortal panels, IFS network switches and UltraSync (ZeroWire) intrusion panels.
Change IP address of devices	Change password in one or more devices
Change password of devices	Change password in one or more devices
Manual firmware update	Update firmware in one or more devices
Date and time sync	Synchronize date and time for all TruVision devices
Backup/restore configuration	Backup/restore the device configuration
Upload camera information	Based on XLS file
Reset password	Reset password of a device based on reset code/file received from UTC Technical Support



As a company of innovation, Carrier Fire & Security reserves the right to change product specifications without notice. For the latest product specifications, visit [firesecurityproducts.com](http://firesecurityproducts.com) online or contact your sales representative.

Last updated on 29 August 2023 - 10:26