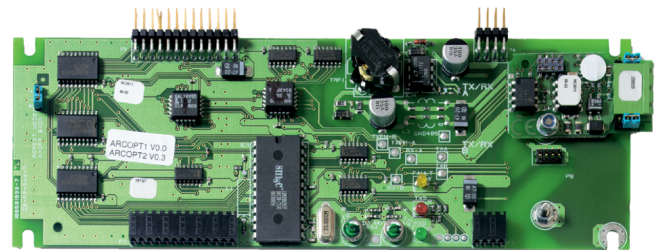


NC2011

1200/2000 Series - Accessory - RS485 ARCNet Network Card

General

The NC2011 is an interface board to connect an RS485 copper network directly into the 1200/2000 series fire panels. It is supplied with one NE2011 pre installed.



Details

- Allows a RS485 interface on the FP1200/2000
- No configuration required
- Supplied with nuts and washers for easy installation
- Full Class-A ring option available with NE2011
- Mixed network support (copper and fibre) with NE2051

NC2011

1200/2000 Series - Accessory - RS485 ARCNet Network Card

Technical specifications

Electrical

Current consumption	50 mA
---------------------	-------

Physical

Dimensions	190 x 64 mm
Weight	85 g

Environmental

Storage temperature	-10°C to +70°C
Operating temperature	-10°C to +50°C
Relative humidity	10% to 95%

Standards & regulation

Certification	EN54-2
---------------	--------

