

DB861

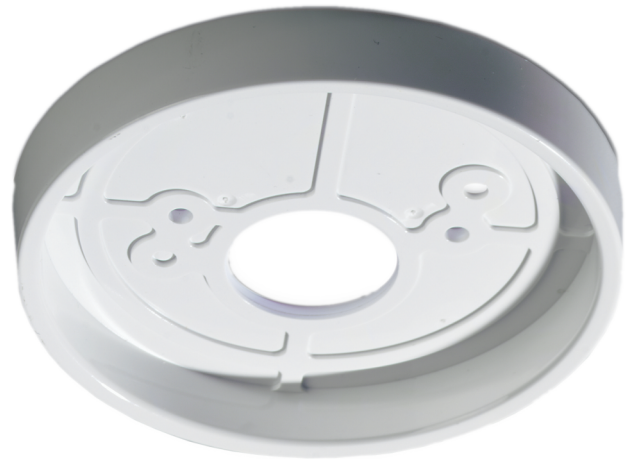
Backplate For Ingress Protection

General

The DB861 back plate provides a high degree of protection against the ingress of water or dust into the back of the detector mounted directly onto a mounting box. Holes are provided for the fixing screws whilst two knockouts cater for European standard fixing entries.

Special Note

When the DB961 is used with the DB950 base, the number tag of the XPERT card must be snapped of and placed in one of the knockout slots provided on the DB861.



Details

- Protects against water/dust ingress
- Improved performance
- Support series 630, 650, 800 and 900 series bases

DB861

Backplate For Ingress Protection

Technical specifications

Physical

Physical dimensions	100 x 10 mm (Ø x H)
---------------------	---------------------

Colour	White
--------	-------

Environmental

Environment	Indoor
-------------	--------

