



DB806

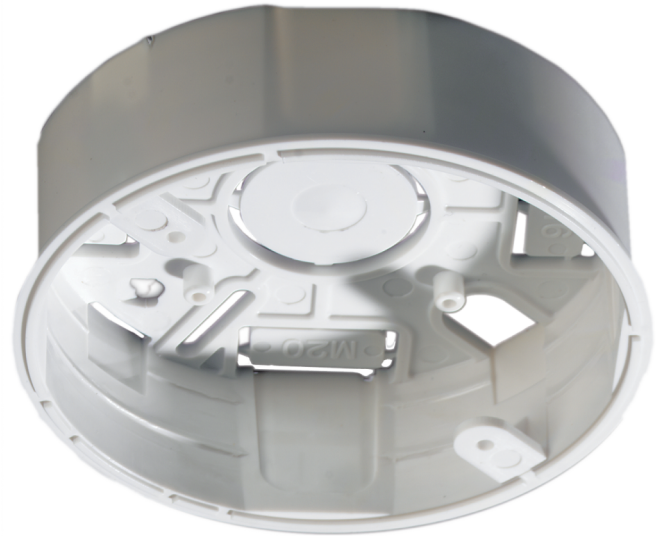
Surface Mount Conduit Box For Fire Detector Bases

General

The DB806 is a versatile accessory for surface mounting fire detector bases. It was specifically designed to be used with 600, 860 and 900 series detectors, but may be used with most industry standard fire detector bases.

Application

The DB806 has knockouts to accept both PG16 or M20 cable glands, conduit or mini-trunking. It is moulded in the same white polycarbonate material as the 600, 860 and 900 series bases and may be installed using either standard or plasterboard screws. Self tapping screws are included to fit the detector base to the conduit box.



Details

- Universal surface mount accessory for 600, 860 and 900 series bases
- Easy to install
- Accepts 16 and 20 mm cable glands or conduit
- Screws to fit base included

DB806

Surface Mount Conduit Box For Fire Detector Bases

Technical specifications

Physical

Physical dimensions	100 x 29 mm (Ø x H)
Net weight	34 g
Colour	White
Material (body)	Polycarbonate
Knockouts	PG16 or M20

Environmental

Environment	Indoor
-------------	--------

As a company of innovation, UTC Fire & Security reserves the right to change product specifications without notice. For the latest product specifications, visit UTC Fire & Security online or contact your sales representative.

Last updated on 10 March 2020 - 12:00



**United
Technologies**

Climate | Controls | Security