

ACL800-BC-USB-B

ACL800 Biometric Capacitive learn-in reader - Fingerprint, Desktop, USB, EM/CASI Prox/HID Prox/ MIFARE Compatible

Product description

ACL800-BC-USB is an USB desktop fingerprint and Proximity/Mifare reader that enables easy fingerprint and card enrollment. The USB desktop reader is used for transfer of the fingerprint to the ACL800 BioManager Software, writing the same fingerprint into a Mifare card, reading the card details and reading the card UID. The fingerprints are stored in the ACL800 BioManager software and can be uploaded in the installed readers, not in the desktop reader.

The ACL800 range

The current ACL800 range is over 10 years old and is due for a refresh. The ACL800 range that consisted out of access readers, keypad readers and request-to-exit sensitive pushbuttons, has been extended with Biometric readers. There are two models, being the swipe and the touch capacitive biometric sensors. They are available in any combination of biometric swipe / touch capacitive, swipe / touch capacitive + keypad, swipe / touch capacitive + proximity reader, swipe / touch capacitive + Mifare reader.

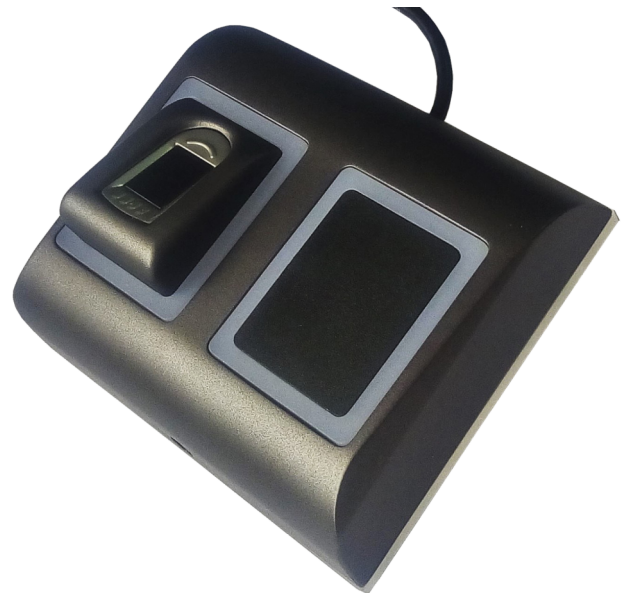
Wiegand range

The Wiegand devices are ideal to be networked by using the TCP / IP to RS485 converter ACL800FL-CONV-W. Up to 31 Wiegand devices can be daisy-chained over RS485 and are managed by the ACL800 BioManager. When you need more devices, then simply add another converter. The access rights can be uploaded from the ACL800 BioManager to all the Wiegand devices connected to the converter. You have the option to either store the fingerprint templates in the reader or on the credential for privacy reasons.

ACL800 BioManager

Fingerprint and reader management software for biometric readers when used with third party access control systems. Fingerprint enrollment is done from any networked biometric reader or from a USB desktop enrollment unit. The fingerprints could be sent to one or all biometric readers in the network. ACL800 BioManager is a free application and also manages the access levels.

Compatible with : Windows 7, Windows 8 and Windows 10.



Details

- Indoor/outdoor
- Attractive and timeless design
- Tri-color LED's
- Desktop reader
- Backlight illumination
- Two-factor authentication
- Biometric fingerprint reader with Proximity / Mifare card enrollment
- Store Fingerprint on card

ACL800-BC-USB-B

ACL800 Biometric Capacitive learn-in reader - Fingerprint, Desktop, USB, EM/CASI Prox/HID Prox/ MIFARE Compatible

Technical specifications

System

Reading distance	Casi-Rusco & HID up to 4 cm, EM up to 6 cm Mifare : 1.5 to 5.5cm
------------------	---

Max. reader distance to panel	50 m
-------------------------------	------

RTE (Request To Exit)	No
-----------------------	----

CSN (Card Serial Number)	Yes
--------------------------	-----

Custom data model	No
-------------------	----

No. of LEDs	3
-------------	---

No. of covers included	1
------------------------	---

Language installation manual	English
------------------------------	---------

Technology

Reader type	BioMetric, Proximity, Smart Card
-------------	----------------------------------

Reader operating-transmitting frequency	125 KHz, 13.56 MHz
---	--------------------

Supported technology 13.56 MHz	MIFARE Classic (CSN), MIFARE DESFire (CSN), MIFARE DESFire EV1 (CSN), Mifare DESFire EV2 (CSN), MIFARE Plus (CSN), MIFARE UltraLight (CSN)
--------------------------------	--

Supported technology 125 kHz	EM4102, GE ProxLite/CASI Prox, HID Prox
------------------------------	---

Mifare type	ISO14443A
-------------	-----------

No. of Mifare bytes CSN	4 Bytes (S50), 7 Bytes (S70)
-------------------------	------------------------------

Read write	No
------------	----

SAM module embedded	No
---------------------	----

Biometric

Biometric type	Fingerprint
----------------	-------------

Biometric sensor type	Capacitive
-----------------------	------------

Biometric template storage size	up to 9500 fingerprints
---------------------------------	-------------------------

Fingerprints per user	1-10 fingerprints
-----------------------	-------------------

1:1000 identification time	970 msec, including feature extraction time
----------------------------	---

Interface & connections

Interface	Wiegand
-----------	---------

Connector type	Pigtail
----------------	---------

Pigtail length	100 cm
----------------	--------

Protocol programming	By ACL800 BioManager Software
----------------------	-------------------------------

Interface	Wiegand 24 to 80 bits; Default: Wiegand 26bit
-----------	--

Tamper type

Pry-off tamper	No
----------------	----

Opening tamper	Yes
----------------	-----

Operation

Stand-alone	No
-------------	----

PIN keypad	No
------------	----

Authentication	Finger, Finger or Card, Finger or/and Card, Finger On Card
----------------	---

Windows compatibility	Windows 7, 8, 10
-----------------------	------------------

Electrical

Power supply type	USB
-------------------	-----

Physical

Physical dimensions	100 x 94 x 30 mm
---------------------	------------------

Net weight	50 g
------------	------

Shipping weight	120 g
-----------------	-------

Colour	Black
--------	-------

Material	ABS
----------	-----

Form factor	Oversized
-------------	-----------

Mounting type	Surface mount
---------------	---------------

Environmental

Environment	Indoor, Outdoor
-------------	-----------------

Operating temperature	-20 to +50°C
-----------------------	--------------

Storage temperature	-20 to +50°C
---------------------	--------------

Relative humidity	0 to 95% noncondensing
-------------------	------------------------

IP rating	40
-----------	----

Regulatory

Compliance	CE, RoHS
------------	----------



As a company of innovation, Carrier Fire & Security reserves the right to change product specifications without notice. For the latest product specifications, visit firesecurityproducts.com online or contact your sales representative.

Last updated on 6 September 2023 - 15:29